

Trolley Lines

Published by the North Jersey Electric Railway Historical Society

Volume Three, Number One

Spring 2006



Tony Hall begins a task for which he has worked and waited for more than 35 years! Yes, cleaning and priming our ex-Boston C-60-P trucks. Bob Hooper has predicted that the trucks will have been tested and installed under the car by year's end. *Photo by Bob Hooper*

Car 2651 Restoration

The acquisition of a pair of trucks overshadowed much of the other work that was done on car 2651. However, this was a productive year none-the-less for our restoration efforts.

Considerable work was done on the roof. New wood pieces for the sloping section of the roof were cut to size by Hank Kaminski. One by one they were set in place and the

roof began to take shape. For the flat part of the roof, a special kind of plywood called "Wiggleboard" was obtained. This is designed to flex with the movement of the car.

Inside the car, the legs for the longitudinal seats were installed. These were cut to size and shape by Hank Kaminski. They replace the makeshift temporary wooden pieces that were holding up the seat frames. Work also proceeded on the letterboard, platforms and side panels. A more detailed description of the restoration work will appear in the next issue of TROLLEY LINES.

**NORTH JERSEY ELECTRIC RAILWAY HISTORICAL SOCIETY
FINANCIAL STATEMENT-2005**

BALANCE ON HAND AT THE CLOSE OF 2004 \$6373.40

INCOME

Contributions	\$29,273.07	
Book Loans	8,300.00	
Dues	3,615.00	
Trolley Treasures Sales	2,956.95	
Equipment Acquisition Fund	1,300.00	
Sales Tables-Train Shows	520.00	
Book Sales	422.00	
Phillipsburg Donations	121.00	
Photo Sales	88.00	
Publications	71.00	
Slide Auction	67.00	
Excursions	65.00	
Map restoration contributions	25.00	
Total Income		\$46,824.05

EXPENSES

Trolley Treasures printing	\$13,110.40	
Book Loan Repayments	2,300.00	
Map Restoration	1,400.00	
Car Restoration Materials	665.31	
Photo Processing	547.11	
Insurance	445.00	
Meeting Room	300.00	
Envelopes	290.74	
Trolley Lines Printing	247.00	
ISBN Registry	244.95	
Internet Service Fee	215.40	
Electricity	150.00	
U.R.H.S. Dues	150.00	
Postal Permit Fee	150.00	
Post Office Box	136.00	
Postage	131.30	
Advertising	120.00	
Refunds	94.50	
Train Show Tables	55.00	
Car Card Lamination	47.99	
Bank Service Fee	30.00	
Map Shipment Charge	26.00	
Stationery	21.50	
Book Delivery Cost	20.50	
Total Expenses		\$20,898.70

Excess of Income Over Expenses \$25,925.35

Balance on Hand - December 2005 \$32,298.75

Outstanding Funds (Cash Within Balance Designated for Projects)

Equipment Acquisition Fund	\$1,300.00	
Public Service Sweeper Restoration Fund	\$954.59	
Window Replacement Fund	170.00	
Total Cash Reserved		\$2,424.59
Un-designated Cash Balance		\$29,874.16

North Jersey E.R.H.S. Board and Staff

President	Robert E. Hooper
Vice President	William F. Keigher
Secretary	Gary Madriss
Treasurer	Frank S. Miklos
Trustees	Joseph Beim Thomas Gormanly Anthony J. Hall William McKelvey Herman Silbiger
Trip Committee	William F. Keigher Gary Madriss
DESTINATIONS Editor	Robert E. Hooper
TROLLEY LINES Editor	Frank S. Miklos
Webmaster	Robert J. Hooper
Website	NJERHS.ORG

Monthly meetings of the North Jersey ERHS are held at the First Presbyterian Church, 1731 Church Street in Rahway on the Third Tuesday of each month at 7:30 PM. During periods of bad weather consult the website to see if the meeting is still scheduled.

Financial Review

In 2005 our income exceeded expenses by \$25,925.35. Most of this was reflected by a contribution of \$25,000 which was designated for the purchase of a pair of trucks for Car 2651. Our biggest expense was for the printing of the book TROLLEY TREASURES which amounted to \$13,110.40. Most of the money for the printing cost came from loans which amounted to \$8,300. Revenue from the sale of the books is being used to repay these loans. As of June 1, nearly half of the loans have been repaid.

Although we were fortunate in receiving a generous contribution for the purchase of trucks, we need to have a source of funds for the acquisition of items that require a major expenditure in the future. Accordingly we have established an Equipment Acquisition Fund and have already received contributions of \$1,300 from several of our members. We thank them for their generosity.

Publications News

Despite our efforts to get caught up, this issue of TROLLEY LINES is behind schedule. We remain off by

one season with work on this Spring 2006 issue being done in the Summer. At this point it seems that the Summer 2006 issue will be completed in the Fall. With luck the Fall 2006 issue will make it to the printer before the start of Winter. We apologize for the delays, but this is a volunteer effort and there are times when other obligations cut into the time that is available to work on the publication.

2006 Dues Renewals

As is our custom, annual dues renewal notices are sent with the Spring issue of TROLLEY LINES. This is done in conjunction with the printing of our annual financial report so that our members have some idea of how their money is being spent. Since the publication is running late, the current year's notice is enclosed. Some members routinely pay their dues at the start of the and their notices will be shown as paid on the renewal notice. During the course of the year members can determine the status of their dues by checking the upper right hand corner of their mailing labels. If it has an "06" or higher your dues are up to date.

For 2006 our dues are remaining at \$15, which is among the lowest of any similar organization in the area. Much of this is because so many of our members have included a contribution with their dues payments. As a non profit 501-C (3) organization all contributions are tax deductible.

A total of 139 members have paid their 2005 dues. An additional 22 members still owe us payment for the year 2005. If your dues are not up to date it will be shown on the dues renewal form. Those whose dues are in arrears will be considered as lapsed and will be dropped from our membership rolls.

Contributions

The following members have included a contribution along with the payment of their 2005 dues:

William J. Armstrong
Douglas Bennington
Joseph Brennan
Andrew J. Burger
Michael & Linda Burshtin
Joe Carlucci
Tom Casey
William E. Christian
Richard Colavechio
Philip G. Craig

See Contributions on Page 4

Contributions (Continued)

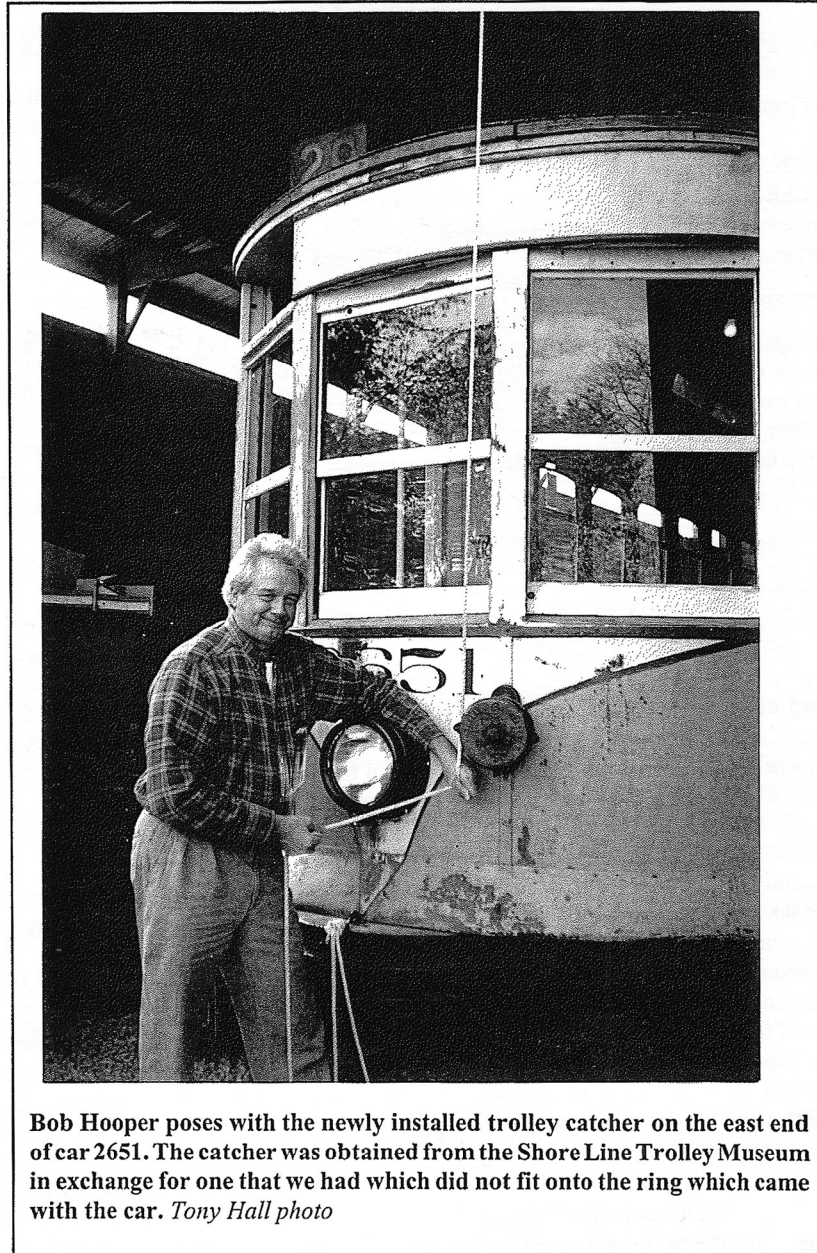
Ted Eickmann
George. B. Gildersleeve
Gene D. Gordon
Thomas P. Gormanly
Raymond C Griffith
Barker Gummere, Jr.
John B. Gutberlet
Richard Haberman
Dennis Hage
Anthony J. Hall
James Homoki
Robert E. Hooper
Neal Huff
Bill Joyce
Hank Kaminski
William F. Keigher
George Knopf
Eliot Lewiskin
Gary Madriss
Daniel V. Marchese
Thomas McBride
Bill McKelvey
Robert A. McNamara
Thomas F. Moran
Ray Neveil
Albert L. Papp, Jr.
S. David Phraner
Rev. Charles A. Reinbold
Leonard Resto
Beverly Rodel
Bruce Russell
Anthony J. Sassa
Tom Scheffer
Joel Spivak
Phil Stevenson
Edson L. Tennyson
William Toikka
Ben H. Tongue
Peter Van Riper
Harry Volpe
Bill Wall
Barbara Westergaard
Rev. Patrick R.C. Wilhelm
G. Lester Whitfield
Chuck Wrege
John A. Yohannan

We also received contributions during the year that were not made in conjunction with the payment of dues.

The following other individuals made contributions during 2005:

Jack L. Effert
Robert B. Hofsteder

We want to thank everyone for their generous financial support.



Bob Hooper poses with the newly installed trolley catcher on the east end of car 2651. The catcher was obtained from the Shore Line Trolley Museum in exchange for one that we had which did not fit onto the ring which came with the car. *Tony Hall photo*